

COP140

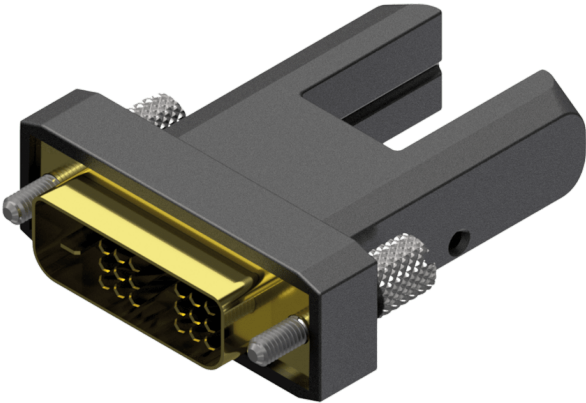
Adapter - HDMI Micro D female - DVI-D male - for use with
CLV215A & CLV220A

Highlights:

- Fiber optic technology
- Exchangeable connectors

Product information:

The COP140 is an HDMI Micro D female to DVI-D male straight adapter for use with the CLV215A & CLV220A only. This adapter can transform the connection of an HDMI cable to DVI for monitors, projectors or TV's where only a DVI input is available.



Properties:



Product Features:

Application	AV & IT
Series	Classic Series