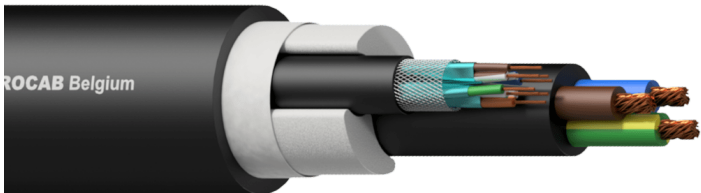


Product information:

The PNC2517 is a hybrid power/network cable which consists of 3 x 2,5mm² power section and a CAT 7 LAN cable. As more and more audio/video/light equipment is network-based this cable is perfectly suited to provide the necessary power and data to these devices. The power and LAN cable each have a separate jacket which makes it easy to split out the cables at the end.

Components:

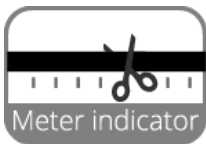
- CableType: HCT70S - CAT7 S/FTP networking cable
- CableType: HPC3G2.5 - 3G2.5 3 x 2.5 mm² PVC power cable



Certification:



Properties:



Product Features:

| | |
|-------------|--------------------|
| Application | Rental & MI |
| Series | Bulk & Accessories |

Physical Characteristics:

| | | |
|---------------|----------|-------------------------------------------|
| Components | | 1 x HCT70S |
| | | 1 x HPC3G2.5 |
| Outer jacket | Material | Highflex PVC 20.3 mm (Ø) |
| | Colours | Black |
| Type of cable | | CAT7 S/FTP Networking & 3G2.5 Power cable |
| Filling | | Non-woven (PET/PA) tape |

Standards & regulations:

| | |
|-------------------|-----------------------------------|
| RoHS2 compliant | According EU Directive 2011/65/EU |
| Reach compliant | According EC 1907/2006 |
| Flammability test | According EN 60332-1-2 |

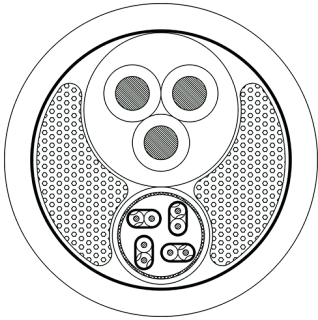
Mechanical Characteristics:

| | | |
|-------------------|---------------------|-----------------------|
| Temperature range | Fixed installation | - 59 °F till + 158 °F |
| | Mobile installation | - 41 °F till + 167 °F |
| Bending radius | Fixed installation | 8 x outer diameter |
| | Mobile installation | 10 x outer diameter |

Variants:

- PNC2517/1 - 100 meter
- PNC2517/3 - 300 meter

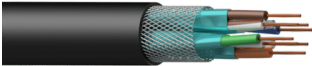
Cross sections:



HCT70S

CAT7 S/FTP networking cable

This cable is only used as a production component for PROCAB pre-made cables and is not sold separately or in bulk. Consult the product sheet for detailed information about this component.



Physical Characteristics:

| | | | | |
|-------------------|----------|-------------------------|---------------------------|-----------------------------------------------------------------------------------------------|
| Inner conductor | Data | Material | BC 7 x 0.155 mm (Ø) (OFC) | |
| | | Section | 0.00020 “² | |
| | | American Wire Gauge | 26 AWG | |
| | | Number of conductors | 8 (4 pairs) | |
| | | Insulation | Material | FPE 1.05 mm (Ø) |
| | | | Colours | Green / White & Green ; Blue / White & Blue ; Orange / White & Orange ; Brown / White & Brown |
| | | Shielding | Aluminium foil | Al-mylar, 100% coverage - 25% Overlap |
| Overall shielding | Braiding | TC (OFC) – 65% coverage | | |
| Outer jacket | Material | PVC 6.3 mm (Ø) | | |
| | Colours | Black | | |

Electrical Characteristics:

| | | |
|------------------------------|---------------|----------------------------------|
| Max. conductor | DC resistance | 148 (Ω / Km) |
| Capacitance | Cond/Cond | 47 (pF/m) |
| Characteristic impedance | | 100 Ω ± 15% Ω |
| Nom. Velocity of propagation | | 74 % |
| Return loss (dB) | | (From 1 to 25 MHz) > 20 dB |
| Dielectric strength | | (Cond/Cond) 0.7 (KV / 1 min. DC) |

HPC3G2.5

3G2.5 3 x 2.5 mm² PVC power cable

This cable is only used as a production component for PROCAB pre-made cables and is not sold separately or in bulk. Consult the product sheet for detailed information about this component.



Physical Characteristics:

| | | | |
|-----------------|----------|----------------------|-------------------------------|
| Inner conductor | Power | Material | BC 48 x 0.25 mm (Ø) (OFC) |
| | | Section | 0.0039 "² |
| | | American Wire Gauge | 16 AWG |
| | | Number of conductors | 3 |
| | | Insulation | Material |
| | | Colours | Blue / Brown / Yellow & Green |
| Outer jacket | Material | | PVC 10 mm (Ø) |
| | Colours | | Black |

Electrical Characteristics:

| | | |
|---------------------|---------------|----------------------|
| Max. conductor | DC resistance | 7.98 (Ω / Km) |
| Resistance | Insulation | > 200 M Ω / km |
| Rated voltage | | Uo/U 300/500 V |
| Dielectric strength | | 2.5 (KV / 1 min. DC) |